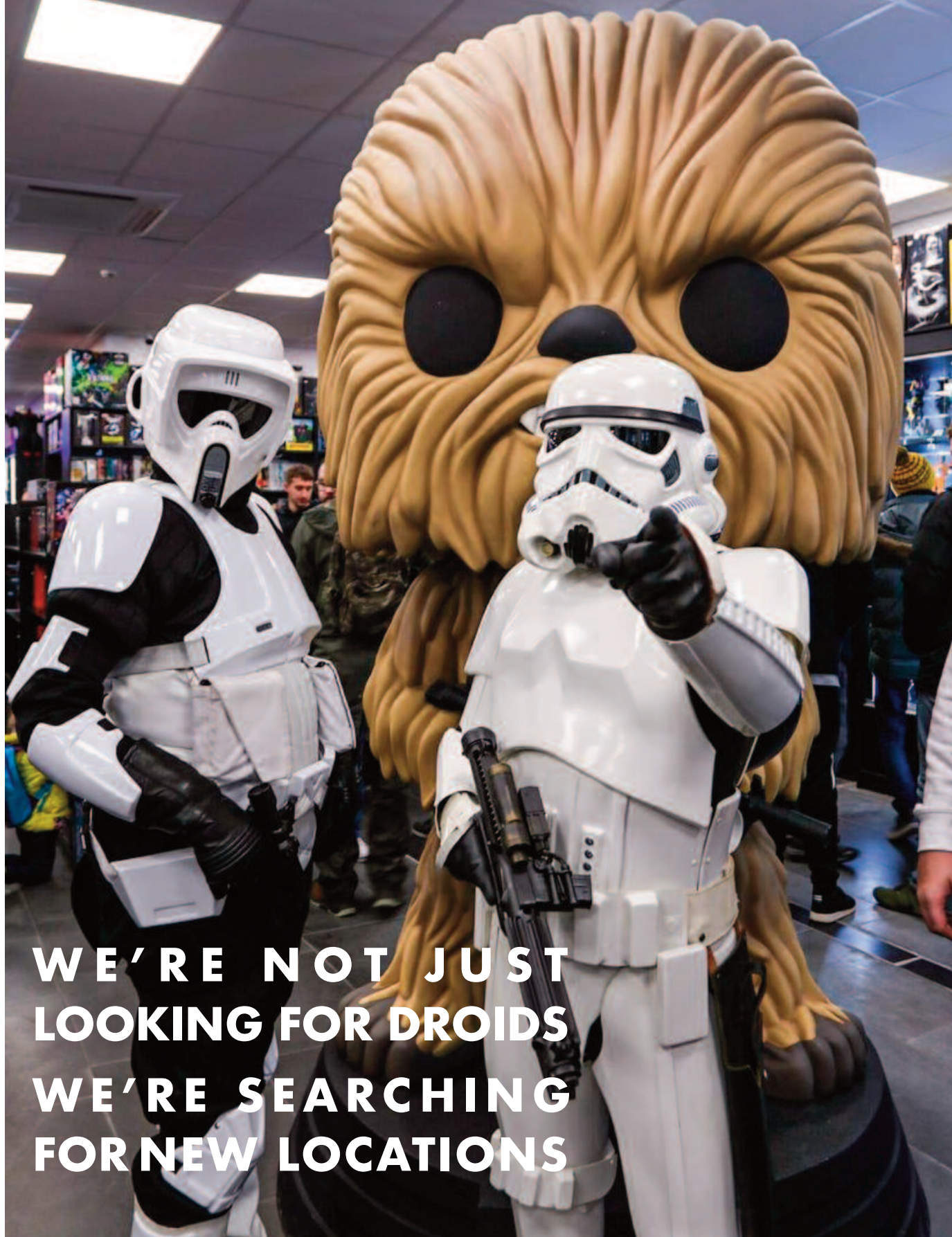


forbiddenplanet
international



**WE'RE NOT JUST
LOOKING FOR DROIDS
WE'RE SEARCHING
FOR NEW LOCATIONS**

WE'RE ACTIVELY SEEKING NEW LOCATIONS

forbiddenplanet
international

Trading since 1976, Forbidden Planet is the best known and largest chain of stores serving the huge and growing pop culture community as sellers of Movie and TV memorabilia, comics, scifi, manga, gaming merchandise and much, much more.

Trading continuously in the high street for over 45 years with stores in Scotland, England, Wales, Northern Ireland and overseas in Ireland (Dublin) and the USA (New York City). A strong market share showing strong financial performance and growth.

Strong and established high street presence which offers Landlords a strong covenant, 'hassle free' and experienced tenant and a quality, modern shop fit.

WHAT OUR LANDLORDS SAY

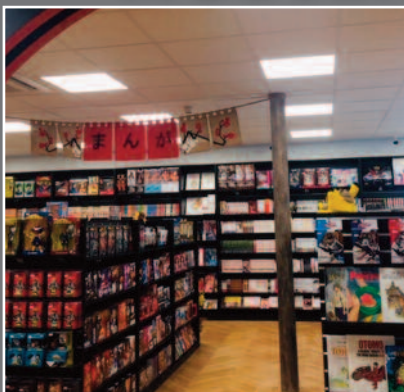
G.A.P.E. Equity Ltd (Stoke-On-Trent) - *'Forbidden Planet have been tenants of ours since we acquired the building. They are excellent tenants for us in Hanley, it is an interesting use with a strong brand and they bring good footfall to the building. Having them in the building certainly assisted us in securing lettings on our adjacent units. They pay their rent on time and have always been easy to deal with.'*

JSM Company Group Ltd (Liverpool) - *Forbidden Planet(Scotland) have recently completed 15 years in the property and we had no second thoughts about working with them to agree an extension as they reinforced their credentials during the last few very challenging years.*

SOME OF THE BRANDS WE SELL



MODERN QUALITY SHOPFITTING



OUR TRADING LOCATIONS

New York City



... access
our stores...



Glasgow

Edinburgh

Belfast

Middlesbrough

Leeds

Manchester

Liverpool

Sheffield

Dublin

Nottingham

Stoke

Wolverhampton

Leicester

Birmingham

Cardiff

LOOKING FOR LOCATIONS HERE:

NEW STORES

- Derby
- Hull
- Milton Keynes
- Swansea
- Brighton
- Plymouth
- Northampton
- Portsmouth
- Oxford
- Luton
- York
- Rochdale
- Reading
- St Albans
- Bath
- Watford
- Norwich
- Basildon
- Peterborough
- Slough
- Exeter
- Lancaster
- Preston

UPGRADED LARGER STORES

- Sheffield
- Cardiff

SIZES REQUIRED

Standard - 1800 to 2800 sq ft (260m)

Superstores - 4000 sq ft (375m)

LEASE TERMS


Standard - Initial preference for one year inclusive 'deals' with a view to taking extended term lease. High St & Shopping Centres

Superstore - 10 year lease with tenant break at year 5. High Street.



CONTACT

Please forward all suitable opportunities including rent, rates and service charges marked for the attention of **Gavin Anderson** - gavin@wbf.co.uk

 0141 221 6161

 07801 852600

wbf.
whitelaw baikie figes
0141 221 6161
www.wbf.co.uk